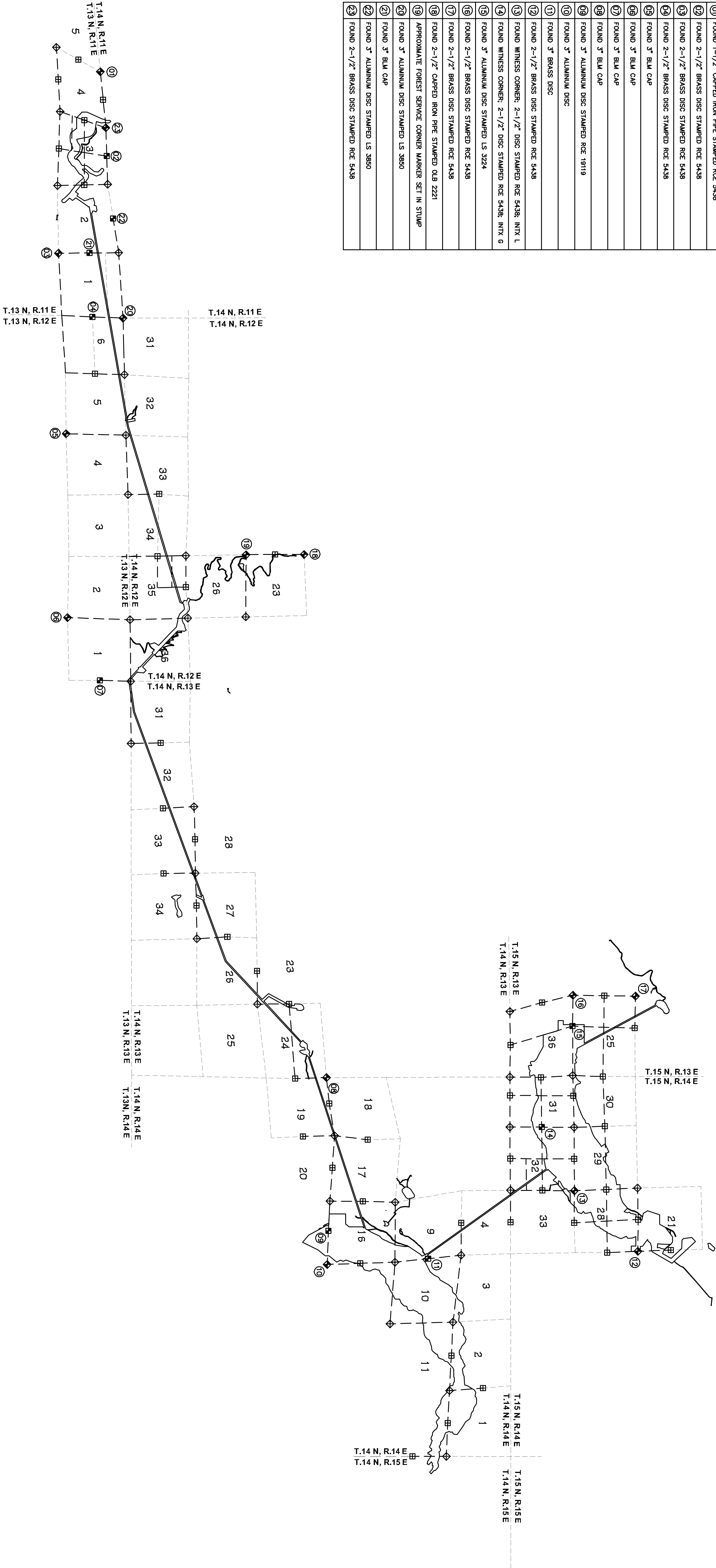


FOUND MONUMENT DETAILS

01	FOUND 1-1/2" CAPPED IRON PIPE STAMPED RCE 5438
02	FOUND 2-1/2" BRASS DISC STAMPED RCE 5438
03	FOUND 2-1/2" BRASS DISC STAMPED RCE 5438
04	FOUND 2-1/2" BRASS DISC STAMPED RCE 5438
05	FOUND 3" BLM CAP
06	FOUND 3" BLM CAP
07	FOUND 3" BLM CAP
08	FOUND 3" BLM CAP
09	FOUND 3" ALUMINUM DISC STAMPED RCE 19119
10	FOUND 3" ALUMINUM DISC
11	FOUND 2-1/2" BRASS DISC
12	FOUND 2-1/2" BRASS DISC STAMPED RCE 5438
13	FOUND WITNESS CORNER: 2-1/2" DISC STAMPED RCE 5438; INTX L
14	FOUND WITNESS CORNER: 2-1/2" DISC STAMPED RCE 5438; INTX G
15	FOUND 3" ALUMINUM DISC STAMPED LS 3224
16	FOUND 2-1/2" BRASS DISC STAMPED RCE 5438
17	FOUND 2-1/2" BRASS DISC STAMPED RCE 5438
18	FOUND 2-1/2" CAPPED IRON PIPE STAMPED OLB 2221
19	APPROXIMATE FOREST SERVICE CORNER MARKER SET IN STUMP
20	FOUND 3" ALUMINUM DISC STAMPED LS 3850
21	FOUND 3" BLM CAP
22	FOUND 3" ALUMINUM DISC STAMPED LS 3850
23	FOUND 2-1/2" BRASS DISC STAMPED RCE 5438



- LEGEND
- ◆ SECTION CORNER, FOUND
 - ◆ SECTION CORNER, PROJECTED
 - 1/4 CORNER, FOUND
 - 1/4 CORNER, PROJECTED

EXHIBIT 'G' PROJECT 2079

MIDDLE FORK AMERICAN RIVER PROJECT

FOUND MONUMENT EXHIBIT

A PORTION OF T.13 N., R.11 E.; T.13 N., R.12 E.; T.13 N., R.13 E.; T.14 N., R.11 E.; T.14 N., R.12 E.; T.14 N., R.13 E.; T.14 N., R.14 E.; T.14 N., R.15 E.; T.15 N., R.13 E.; T.15 N., R.14 E.; T.15 N., R.15 E.

PLACER COUNTY, CALIFORNIA

FEBRUARY 11, 2011

ANDREGG

0 0.5 MI 1 MI 2 MI 3 MI 4 MI